

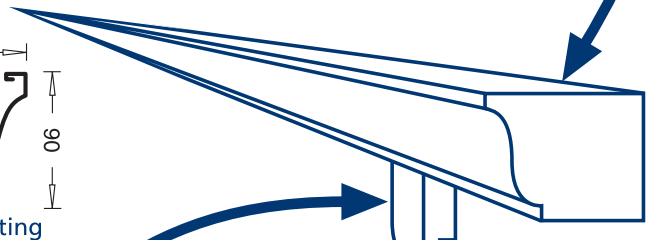
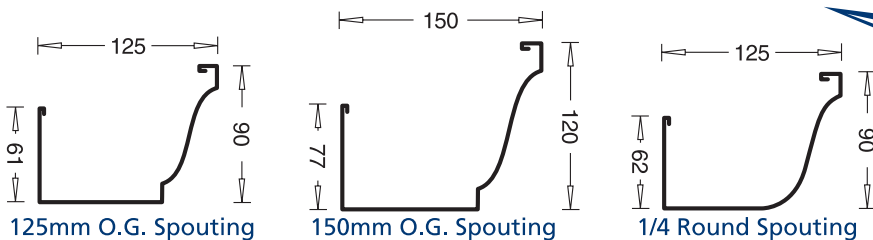
Continuous Spouting & Downpipes

Continuous Spouting & Downpipes have developed quality products, service and workmanship over the 20 years we have been in operation in Hawkes Bay and surrounding areas. We are a family operation and the **ONLY** locally owned Continuous Spouting business. We are suppliers of rainwater systems that are made from durable low maintenance **copper & colour steel** products, providing long lasting quality with aesthetically appealing design.

Spouting Profiles

Continuous Spouting is ideally suited to the New Zealand climate. The use of **Copper & Colour Steel** provides a high quality, attractive product that gives maximum protection from UV rays and it will not warp, crack, or go brittle.

Manufactured on site, the spouting is made to measure. There are no joins to leak or sag. Continuous Spouting is available in **O/G 125mm & 150mm** and **1/4 Round** providing designs to compliment all styles of homes.

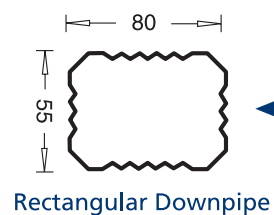


Downpipe Profiles

Continuous Downpipes are made from the same tough, weather-resistant, low maintenance, **Copper & Colour Steel**.

A choice of **contemporary rectangular** and **traditional round downpipes**, compliments the design of any residential, commercial or Industrial building. The **pleated bends** are designed to follow the line of flow, thus enhancing the downpipe's run off capability.

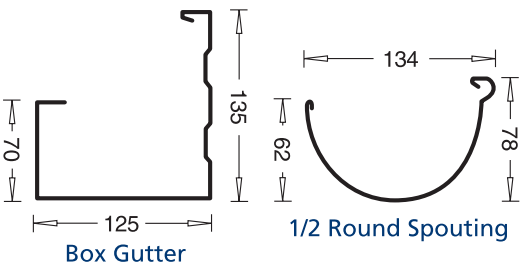
'We go to any length'



Rectangular Downpipe

Other Products

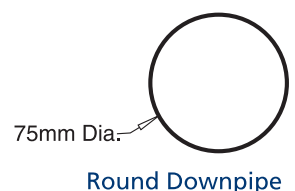
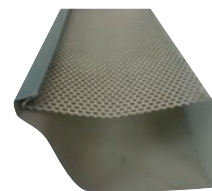
Box Gutter and 1/2 Round Spouting is available in 6 metre lengths.



'Add beauty & value to your home'

Leaf Guard

Leaf Guard prevents spouting from clogging with leaves and other debris.



75mm Dia.

Round Downpipe

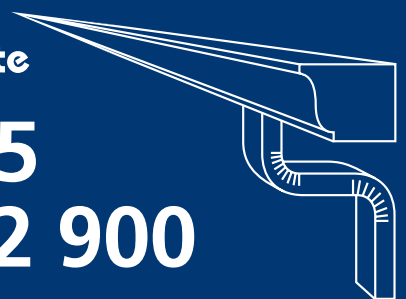
Call Steve Mackinlay or Kevin Ambler today for a free quote

Napier **843 2333**

Hastings **870 9555**

CHB **858 6222**

Free Phone **0800 222 900**





150mm O.G. Spouting



O.G. Spouting with Rectangular Downpipes



Quarter Round Spouting with Round Downpipes



Quarter Round Copper Spouting with Round Copper Downpipes